



Advent Wreath in a Box

This is a simple Advent wreath for people of all ages to use at home.

To make the wreath you will need

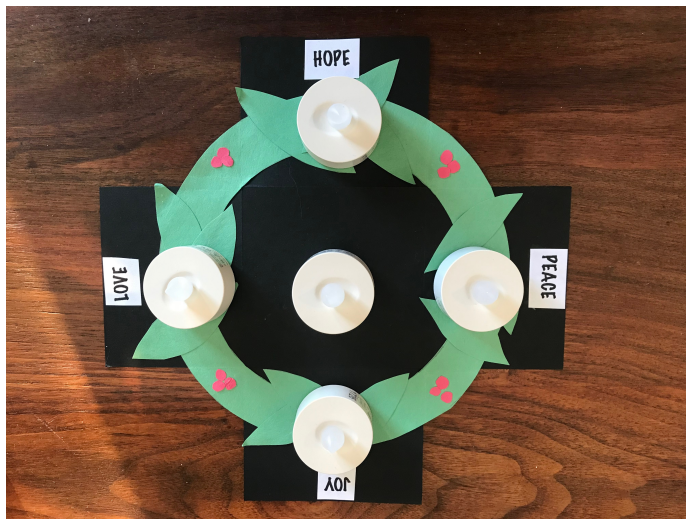
- one piece of heavy weight card stock (any colour that contrasts with green)
- one piece of green construction paper
- scrap of red construction paper or a red marker
- print out for box, wreath and leaf pattern including the four words of Advent (next page of this instruction sheet)
- 5 battery operated votive candles (available at craft and dollar stores)
- 1 metre length of ribbon (any colour, although blue or purple are the traditional colours of Advent)
- scissors
- white craft glue or a glue stick

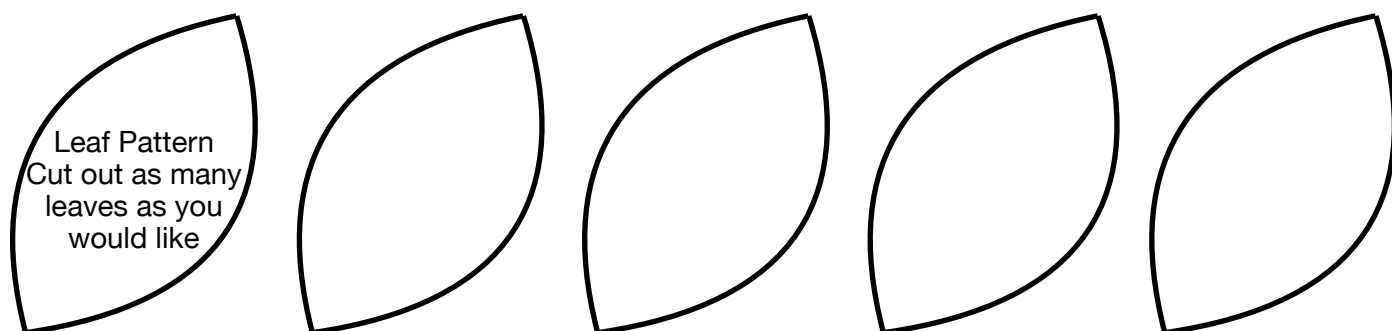
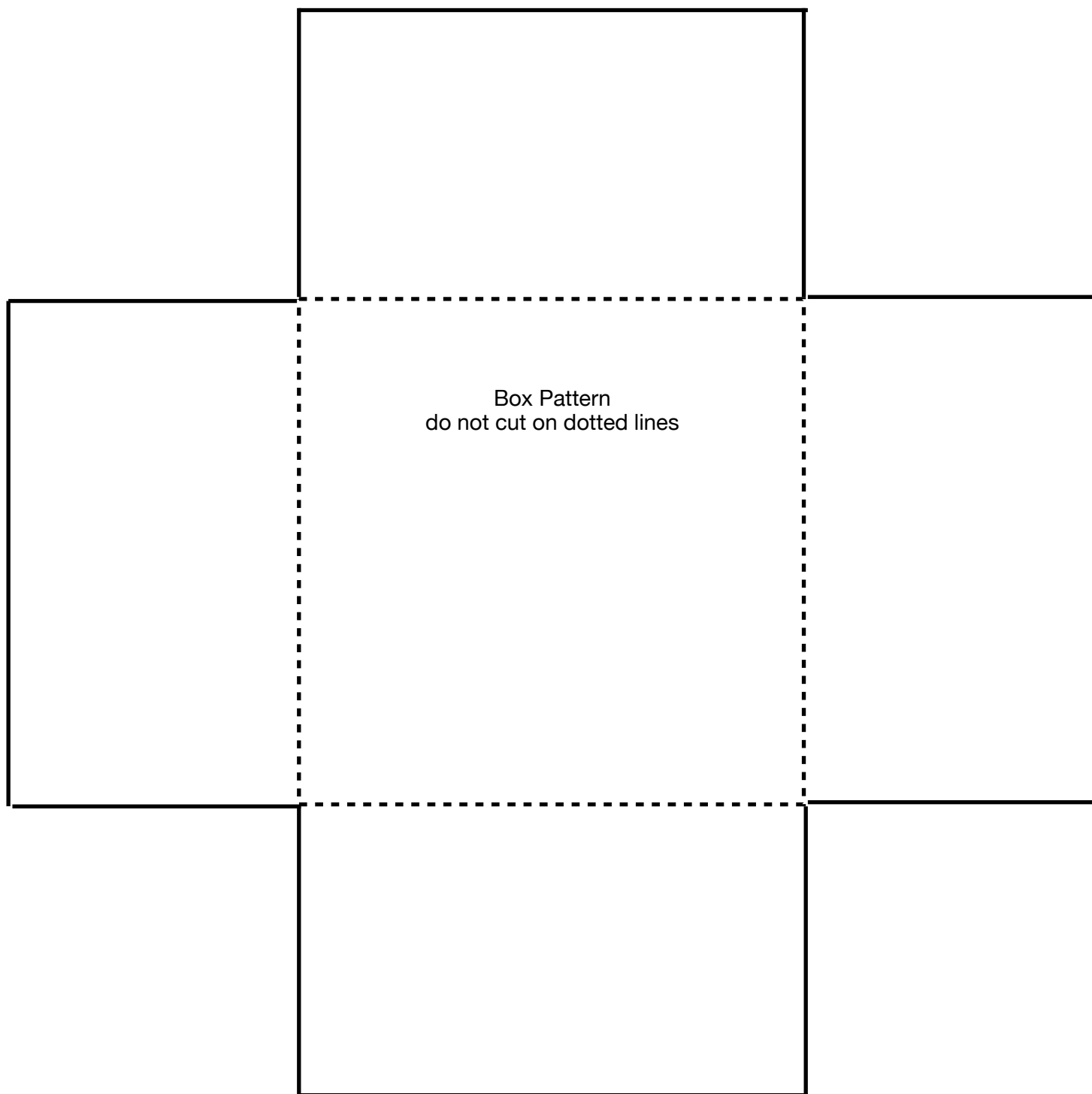
Instructions

- Print out the pattern sheets for the box, wreath, leaves and words.
- Cut each pattern piece out, noting that the solid lines are the lines for cutting out and the dotted lines are folding lines for the box itself.
- Trace the box pattern on your piece of heavy card stock and cut your box piece out.

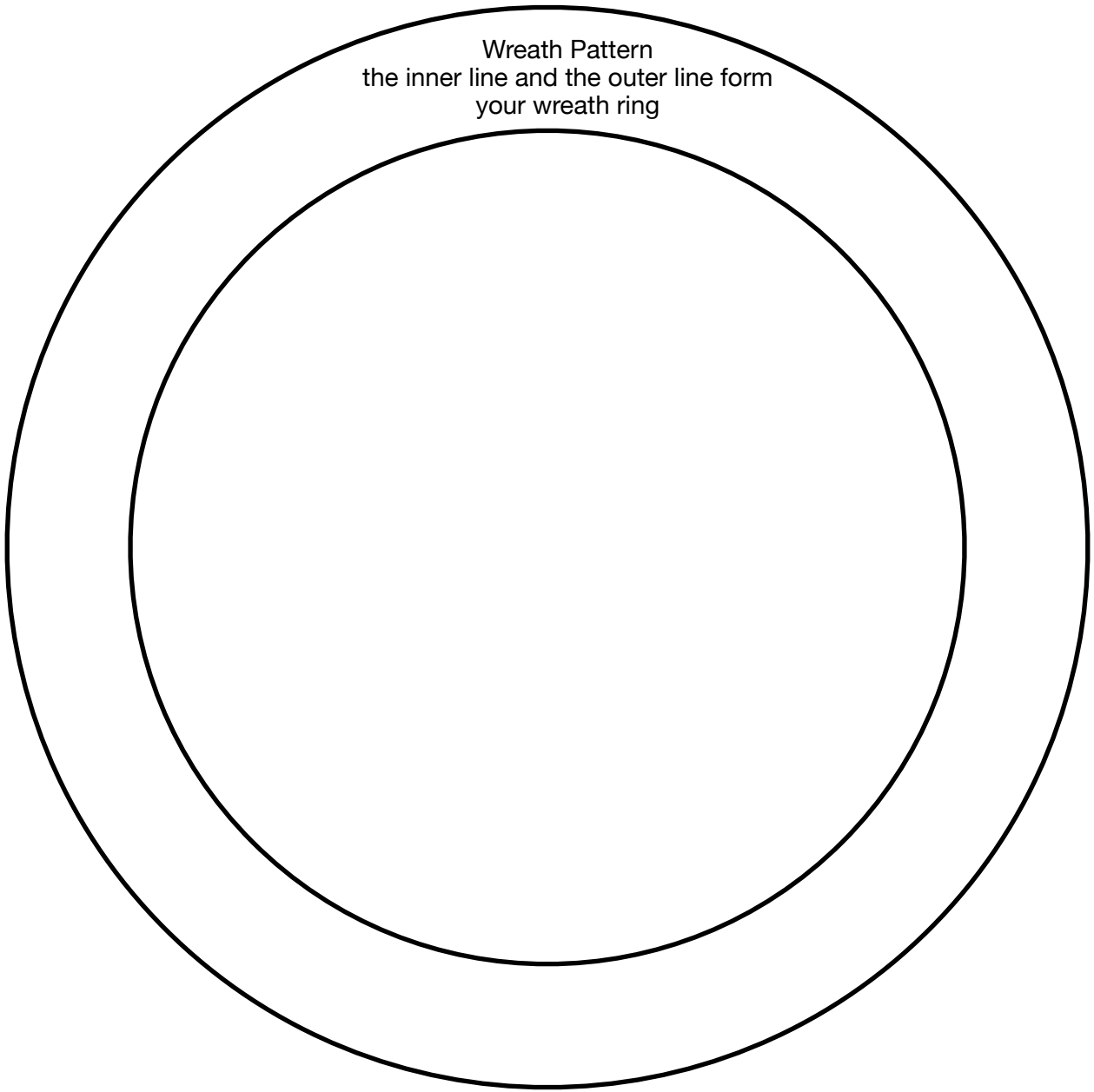
- Trace the ring pattern on your piece of green construction paper and cut out your ring for the base of your wreath. Trace and cut out as many leaves as you wish from the green construction paper scraps.
- Cut out the four words from your print out.
- Cut out 12 or more small circles from your red construction paper if you want to add berries to your wreath.
- Fold your box along the dotted lines and open back up to lay flat.
- Centre and glue your wreath onto the box piece.
- Glue your leaves onto the wreath ring and add your berries with the red paper dots or with a red marker
- Glue each of the four words onto each flap of your box, or write the words on each flap.
- Refold your box up into a box shape, taking care to gently fold the wreath along the flap edges into the box so everything tucks in nicely.
- Place four of your battery operated votive candles on the base of your box, and add the fifth candle on top of the four for storage.
- Tie your ribbon around your box to keep it closed. Open the box for using.

Thank you to Willowdale Presbyterian Church for sharing this idea with us.





Wreath Pattern
the inner line and the outer line form
your wreath ring



Hope Peace Joy Love

Four Advent Words
cut each out separately